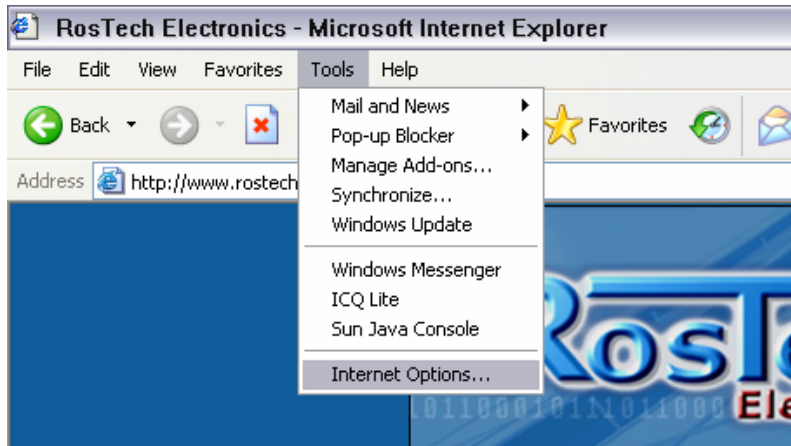


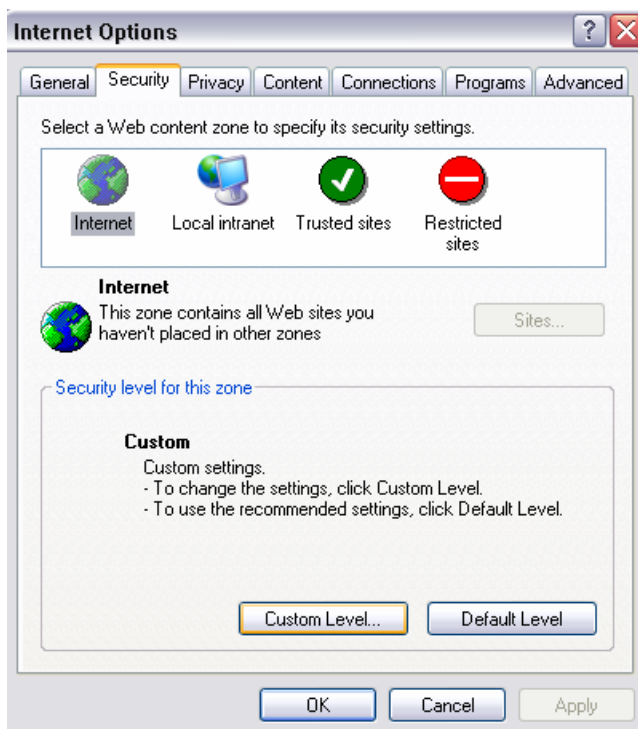
RosTech Remote Monitoring Test setup instructions

How to enable ActiveX Controls in Microsoft Internet Explorer

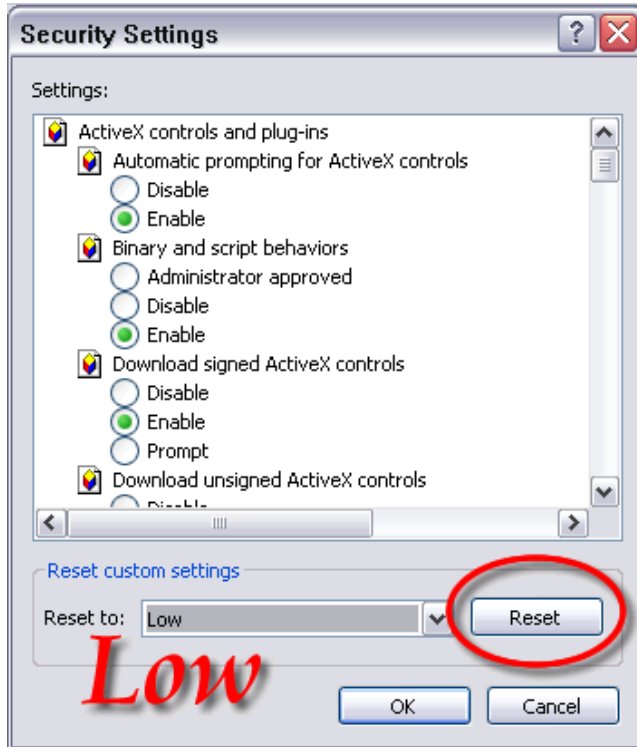
Step 1: Open Internet Explorer. Go to the Tools menu, and select Internet Options.



Step 2: Once the Internet Options window appears, select the Security tab, and click Custom Level.



Step 3: At the bottom Reset level to **Low** and click **Reset**, click **YES** when asked to change the settings and **OK** at the bottom of the screen **2 times**.



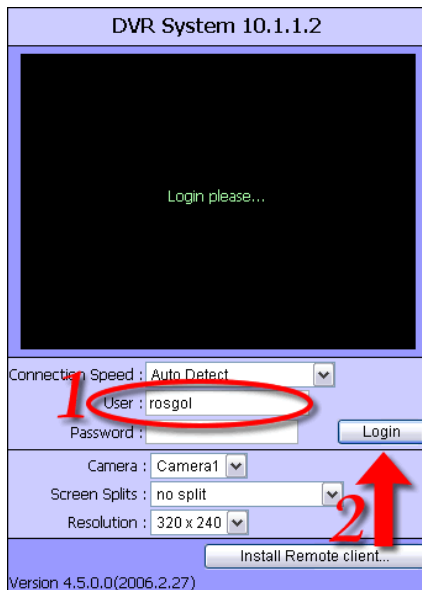
PROCEED TO THE NEXT PAGE...>>

How to access Rosgol IP address for remote monitoring

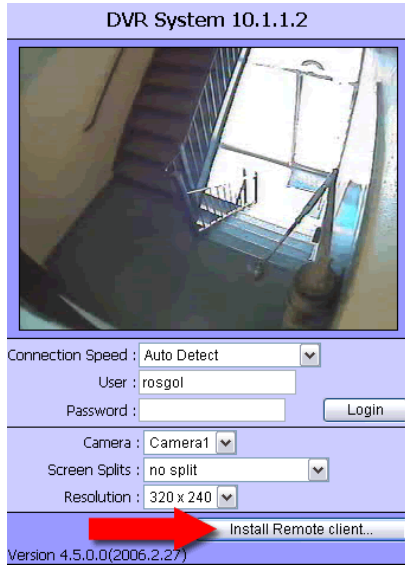
Enter: **69.159.241.211** in to the Address bar of Internet Explorer
press ENTER on the keyboard



When asked to allow install the program select **YES** and if prompted for UNBLOCK press **YES**.



In DVR System on the right enter
User: rosgol
leave the password field empty, click Login.



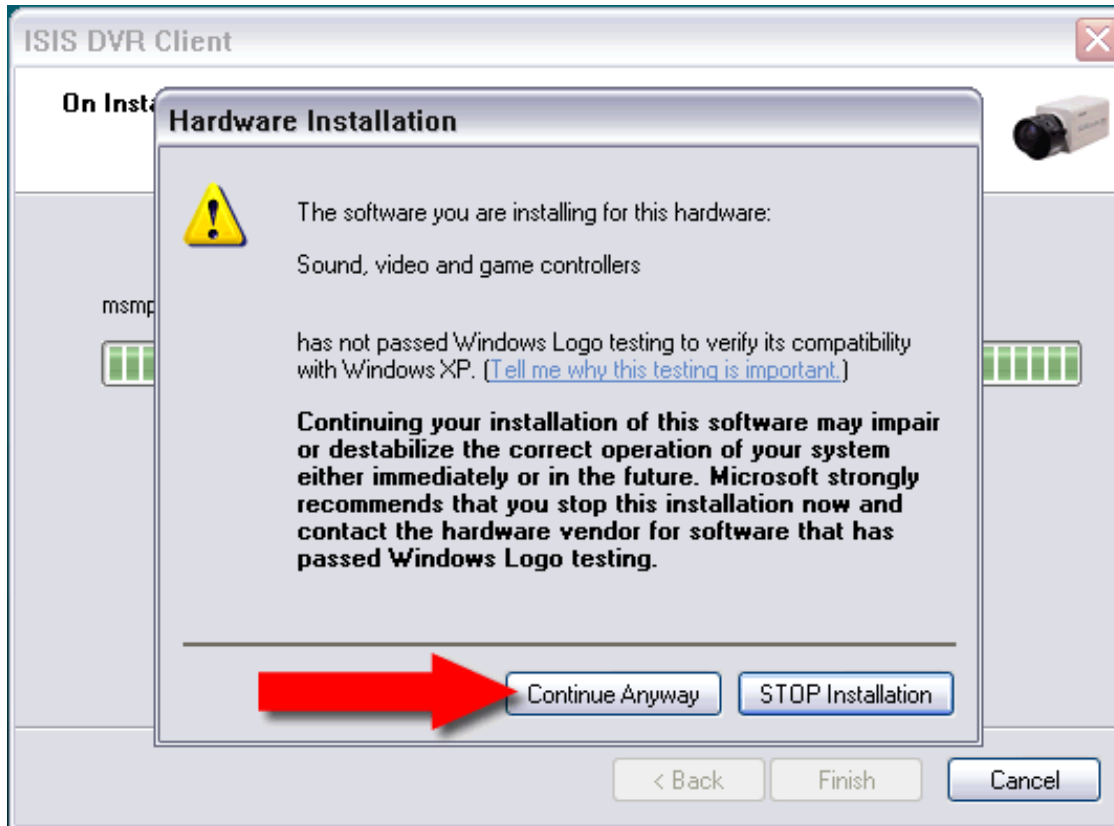
Once video picture appears, click on **Install Remote client...**

Moments later this screen will appear:



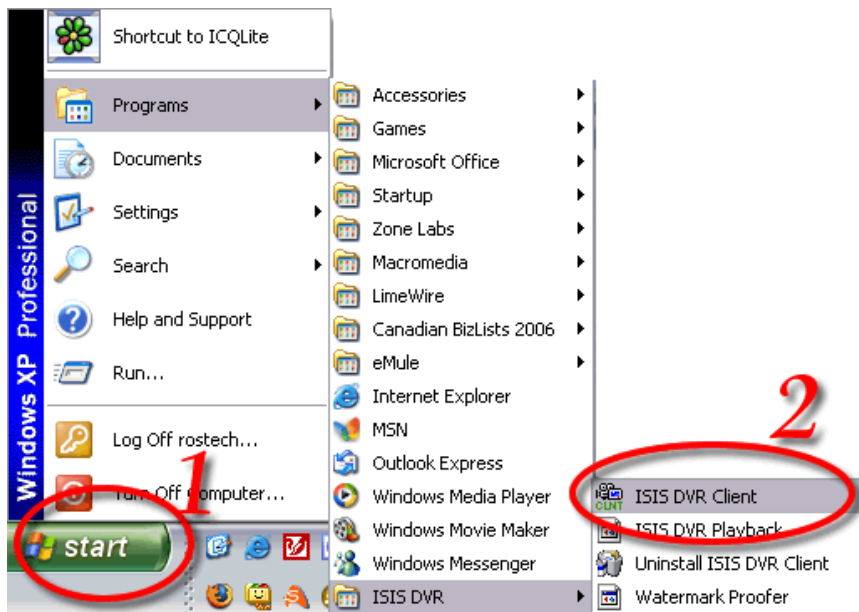
Click **Next** here and on the **following screen Next** for automatic Installation as well.

Shortly after the program will show this, select **Continue Anyway**

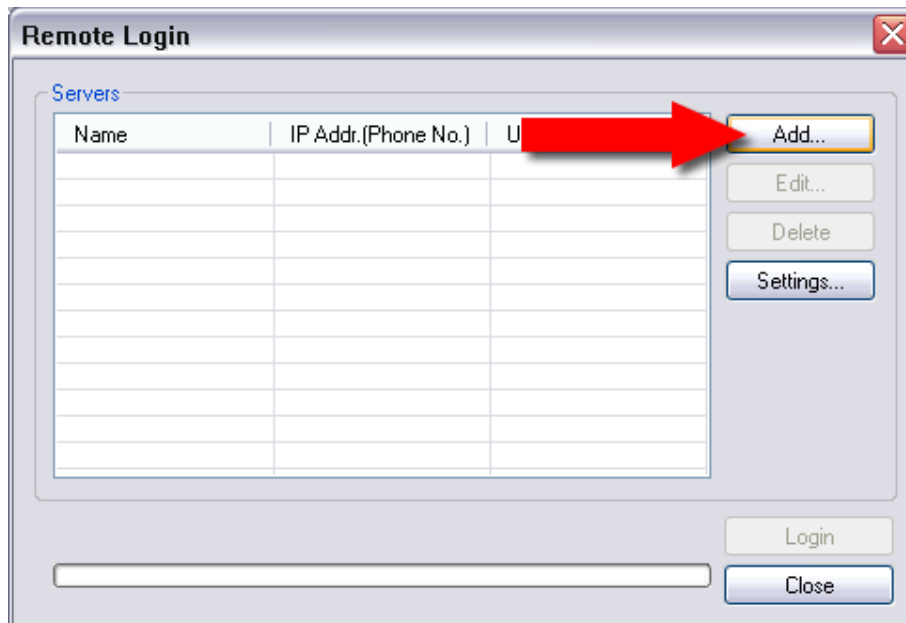


On the last screen click **FINISH**.

Then go to **START** button on the bottom of the screen and locate the program called **ISIS DVR Client**, click on it.



In this screen click Add...

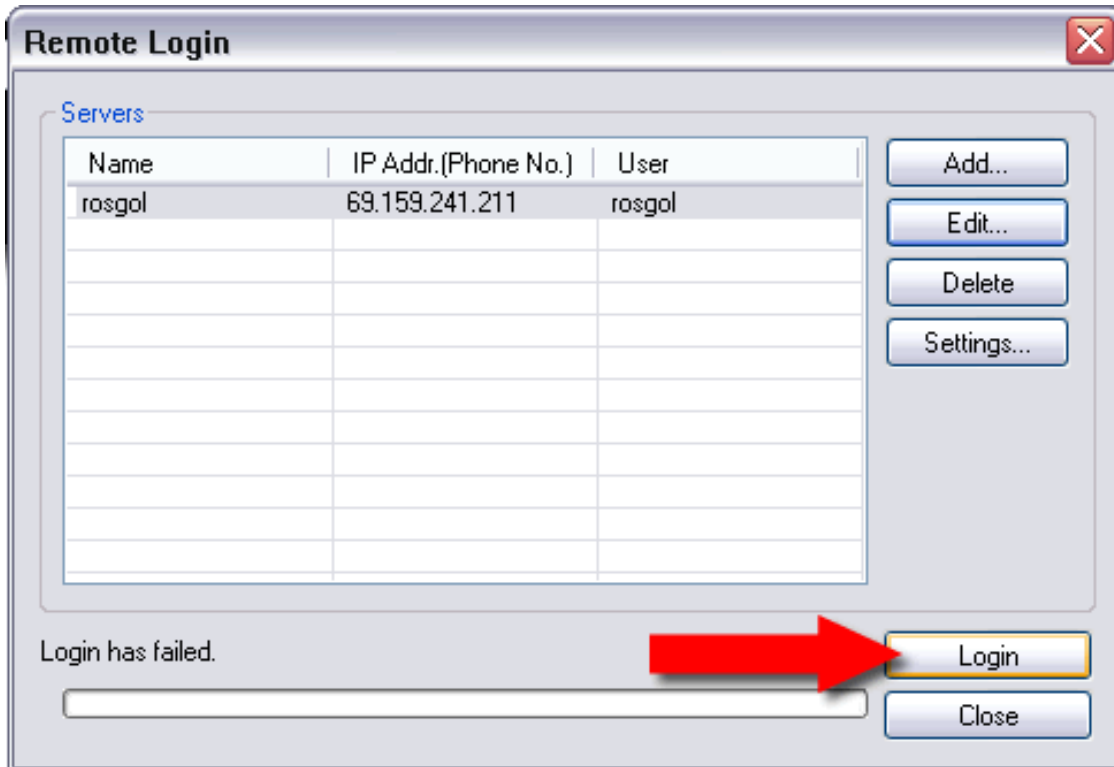


Fill out the next screen exactly the following way:



Then click **OK**

On the next screen **select the line with rosgol** (this way the program will look like from now on when you start it) select **Login**



Next screen will be the program with all the functions for remote monitoring.



To exit the program click **POWER** button and select Exit.